



Iowa Ag News – Cattle on Feed

Upper Midwest Region - Iowa Field Office · 210 Walnut Street Ste 833 · Des Moines IA 50309 · (515) 284-4340 · (800) 772-0825
fax (855) 271-9802 · www.nass.usda.gov

Cooperating with the Iowa Department of Agriculture and Land Stewardship

April 25, 2014

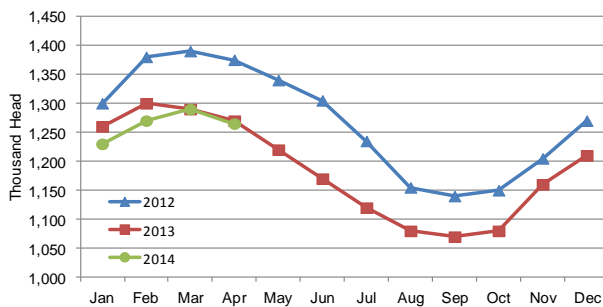
Media Contact: Greg Thessen

Cattle and calves on feed for slaughter market in Iowa for all feedlots totaled 1,265,000 on April 1, 2014 according to the USDA, National Agricultural Statistics Service, Iowa Field Office. The inventory is down 2 percent from March 1, 2014 and down 5,000 head from April 1, 2013. Feedlots with a capacity greater than 1,000 head had 670,000 head on feed, unchanged from last month but up 6 percent from last year. Feedlots with a capacity less than 1,000 head had 595,000 head on feed, down 4 percent from last month and down 7 percent from last year.

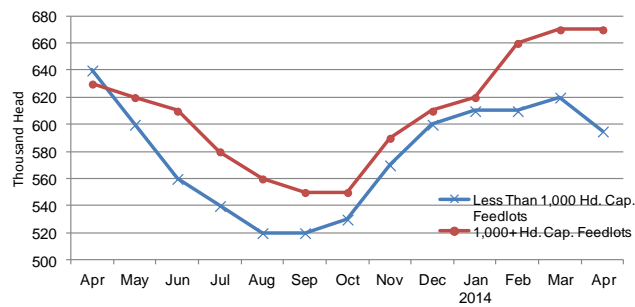
Placements during March totaled 121,000 head, a decrease of 8 percent from last month but up 2 percent from last year. Feedlots with a capacity greater than 1,000 head placed 71,000 head, down 17 percent from last month and down 1 percent from last year. Feedlots with a capacity less than 1,000 head placed 50,000 head. This is up 11 percent from last month and up 6 percent from last year.

Marketings for March were 141,000 head, up 32 percent from last month and up 6 percent from last year. Feedlots with a capacity greater than 1,000 head marketed 69,000 head, down 7 percent from last month but up 1 percent from last year. Feedlots with a capacity less than 1,000 head marketed 72,000 head, up 39,000 head from last month and up 11 percent from last year. Other disappearance totaled 5,000 head.

Cattle on Feed, Inventory on all Feedlots, Iowa:
2012-2014



Cattle on Feed, Inventory by Feedlot Capacity, Iowa:
Current Month & Past 12 Months



All Cattle on Feed, Iowa

Item	Lots 1,000+ Head	Lots Less than 1,000 Head	All Lots
	(1,000 Head)	(1,000 Head)	(1,000 Head)
Cattle on Feed, March 1, 2014.....	670	620	1,290
March Placements	71	50	121
March Marketings	69	72	141
March Other Disappearance	2	3	5
Cattle on Feed, April 1, 2014	670	595	1,265

Cattle on Feed: Number on Feed, Placements, Marketings, and Other Disappearance by Month, 1,000+ Capacity Feedlots

[Cattle and calves on feed are animals for slaughter market being fed a ration of grain or other concentrates and are expected to produce a carcass that will grade select or better.]

State	Cattle on Feed April 1			Placements during March			Marketings during March			March Disappearance other than Slaughter ¹		
	2013 (1,000 Head)	2014 (1,000 Head)	'14 as % of '13 (Percent)	2013 (1,000 Head)	2014 (1,000 Head)	'14 as % of '13 (Percent)	2013 (1,000 Head)	2014 (1,000 Head)	'14 as % of '13 (Percent)	2013 (1,000 Head)	2014 (1,000 Head)	'14 as % of '13 (Percent)
Arizona	278	277	100	32	30	94	23	24	104	1	1	100
California	485	475	98	58	53	91	50	70	140	3	8	267
Colorado	980	970	99	160	165	103	160	130	81	10	5	50
Idaho	215	205	95	26	29	112	35	33	94	1	1	100
Iowa	630	670	106	72	71	99	68	69	101	4	2	50
Kansas	2,100	2,090	100	425	390	92	350	345	99	25	15	60
Minnesota	133	136	102	17	18	106	15	16	107	1	1	100
Nebraska	2,430	2,500	103	400	410	103	390	395	101	10	15	150
Oklahoma	305	275	90	55	52	95	53	46	87	2	1	50
South Dakota ..	230	240	104	32	37	116	31	35	113	1	2	200
Texas	2,580	2,500	97	530	470	89	480	430	90	20	10	50
Washington	233	202	87	35	35	100	34	29	85	1	2	200
Other States	325	320	98	42	35	83	35	38	109	2	2	100
United States ...	10,924	10,860	99	1,884	1,795	95	1,724	1,660	96	81	65	80

¹Includes death loss, movement from feedlots to pasture, and shipments to other feedlots for further feeding.

Cattle on Feed: Number on Feed by Class, 1,000+ Capacity Feedlots by Quarter, State, and United States, 2013-2014

State	Steers & Steer Calves			Heifers & Heifer Calves			Cows & Bulls		
	April 1, 2013 (1,000 Head)	Jan. 1, 2014 (1,000 Head)	April 1, 2014 (1,000 Head)	April 1, 2013 (1,000 Head)	Jan. 1, 2014 (1,000 Head)	April 1, 2014 (1,000 Head)	April 1, 2013 (1,000 Head)	Jan. 1, 2014 (1,000 Head)	April 1, 2014 (1,000 Head)
Arizona	271	268	272	7	6	5	0	0	0
California	420	470	435	64	40	40	1	0	0
Colorado	610	615	640	365	340	325	5	5	5
Idaho	122	125	120	91	91	83	2	4	2
Iowa	430	425	490	200	195	180	0	0	0
Kansas	1,160	1,060	1,120	935	945	960	5	5	10
Nebraska	105	107	103	27	22	32	1	1	1
Oklahoma	1,540	1,545	1,680	860	820	775	30	35	45
South Dakota .	195	170	180	110	90	95	0	0	0
Texas	123	125	136	91	80	86	16	25	18
Washington	1,590	1,510	1,550	989	929	949	1	1	1
Other States ...	144	120	125	86	77	76	3	4	1
United States .	205	240	215	119	95	104	1	0	1
	6,915	6,780	7,066	3,944	3,730	3,710	65	80	84